



Waikapū Community Association

To enhance the quality of life for the residents of Waikapū through the preservation and appreciation of its history, natural environment, and values of its rural tradition.

MAY 21, 2012

TESTIMONY BY THE WAILUKU COMMUNITY ASSOCIATION
TO THE
GENERAL PLAN COMMITTEE OF THE MAUI COUNTY COUNCIL
ON THE
DIRECTED GROWTH PLAN,
CHAPTER 8 OF THE DRAFT MAUI ISLAND PLAN

Dear Chair Baisa and Committee Members,

The Waikapū Community Association (WCA) is pleased to have another opportunity to present its views on the Maui Island Plan.

The following are the key points of the Association's testimony today:

1. **Apply the Small Town Growth Boundary, as approved at its last meeting by this Committee for table 8-2 of this Chapter as shown in the attached proposed map.** The proposed areas to be designated for regional parks, preservation, and open space must be included in this Small Town Growth Boundary area to protect them from future urban development pressures.
2. **Close the Urban Growth Boundaries at the south boundary of Wailuku and Kahului similar to the GPAC Directed Growth Map, also shown in the attached map.** The Growth Boundary alignment as proposed between Wailuku/Kahului and Waikapū serve to ensure an open space buffer that will permit very limited build-out in order to maintain distinct and recognizable separation between the urban core of Wailuku/Kahului and the Small Town designation for Waikapū.
3. **Create a hard and protected boundary to the east of the proposed Wai'ale planned growth area by explicitly excluding the entire band of sand dunes located in that area from any development considerations by clearly marking it on the final**

Waikapū Community Association

P.O. Box 3046, Wailuku, Hawaii 96793 WaikapuCA@hawaii.rr.com

map as a Protection Area or by including explicit language in Chapter 8 to establish such a Protection Area.

4. **Reduce the projected and permitted quantity of residential units in the Wai`ale (new town) and Waikapū Tropical Plantation Town planned growth areas.** Wai`ale should be limited to 1,450 new residential units, Waikapū Tropical Plantation Town should be limited to 800 new residential units, as well as up to 80 rural lots. A small Maui town like Waikapū, counting less than 1100 homes today, should not be asked to absorb 4000 additional homes (please note that in its FEIS, Wai`ale considers itself part of the Waikapū area!).
5. **Adjust the Urban Growth Boundary southward from Puunene Avenue between Kuihelani Highway and Mokulele Highway, to provide for the necessary expansion of the Kahului Urban core** to compensate for the loss of area between Kahului and Waikapū from the adjustment recommended in (1 and 2), and the loss of permitted residential units from the adjustment recommended in (4).
6. **Stipulate that the 325 acres added at the south-east boundary of Waikapū must be master planned in a single, comprehensive plan.** That plan must direct the location of County Baseyard facilities away from the community of Waikapū, towards Kuihelani Highway and must direct traffic generated by the proposed large sports field complex away from the community of Waikapū.

The Waikapū Community Association wants to remind you of its testimony provided to this Committee at previous meetings, particularly on March 1 and March 14 of this year. Please do not succumb to the pressure to gut the Maui Island Plan by removing much of the excellent work by the GPAC, representing all aspects of the community, large land interests and developers included.

Please maintain the intent of the creators of the Maui Island Plan, which is to provide direction and controls for future development on Maui, so that it will reflect the wishes of the people of this island. And please adopt the Maui Island Plan during your current term.

Mahalo.

Presented on behalf of the membership and board of the Waikapū Community Association by Jacob Verkerke, President.

Waikapū Community Association

P.O. Box 3046, Wailuku, Hawaii 96793 WaikapuCA@hawaii.rr.com

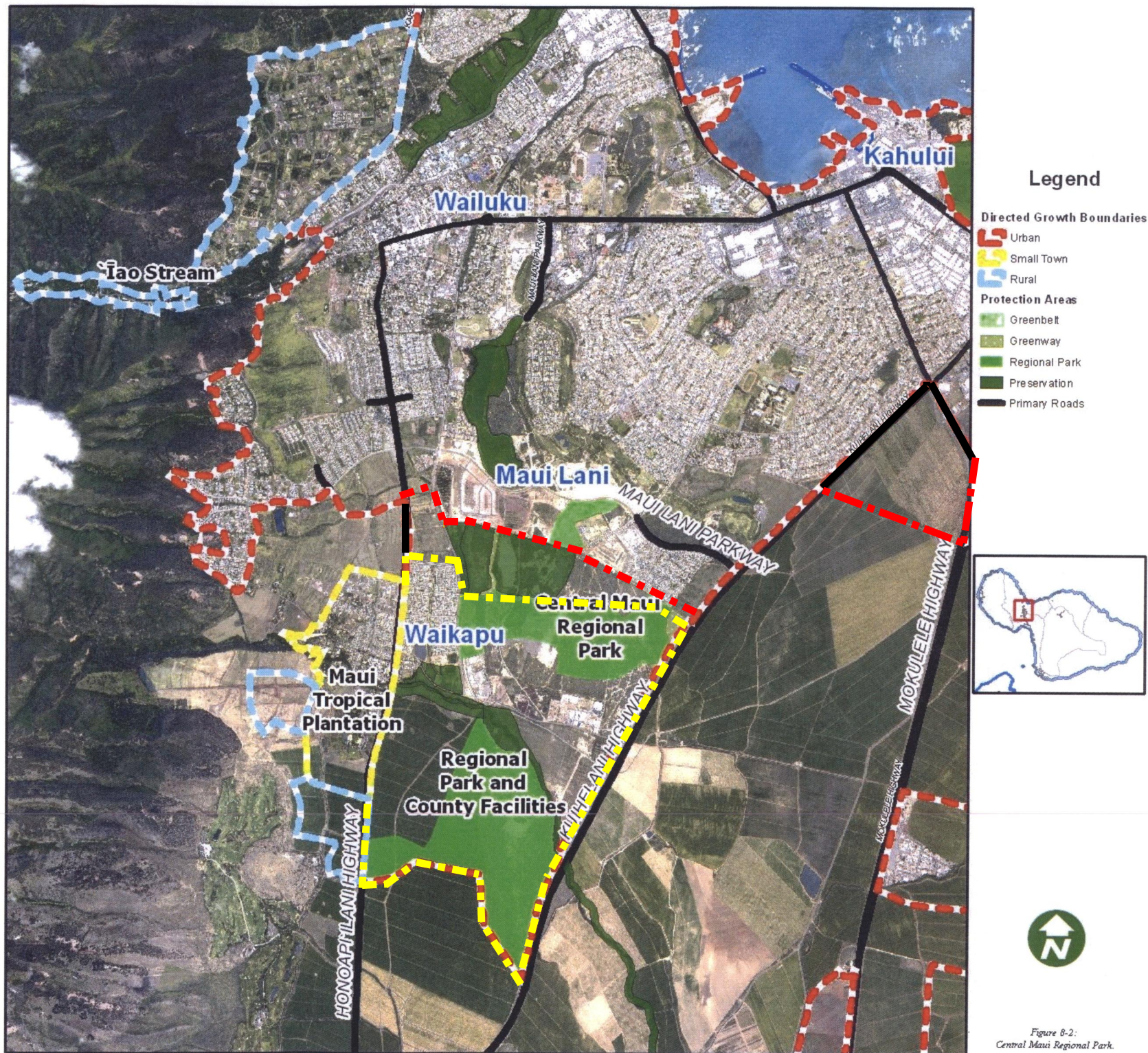


Figure 8-2:
Central Maui Regional Park.